

Dal 1929
Since 1929



SIAPI
GRINDING TECHNOLOGIES

Soluzioni per la finitura dei metalli
Solutions for metal finishing



Introduzione

Siapi, sempre in continua evoluzione, realizza soluzioni su misura per i propri clienti. Le mole in gomma siapi sono prodotte con metodi di fabbricazione speciali e perfezionati nel tempo, al fine di ottenere una mola di finitura dall'ottimo rendimento. L'utilizzo combinato della gomma sintetica e di quella naturale permette di ottenere un impasto tenace, resiliente e flessibile. Le nostre mole ammortizzano il taglio e si adattano alla superficie da lavorare senza danneggiare il pezzo o modificarne la geometria, raggiungendo punti estremamente difficili.

Poco rumorose, rilasciano meno polveri e possono essere utilizzate in maniera efficace sia su macchine manuali che automatiche. I tecnici siapi lavorano su misura, ascoltano il cliente e forniscono un prodotto a lui funzionale e soddisfacente.

Introduction

Siapi, always focused on continuous development, realizes customized solutions for its customers.

Our rubber wheels are produced with special methods which have been perfected over time in order to manufacture a finishing wheel able to obtain an excellent performance. The combination of synthetic and natural rubber makes it possible to create a tenacious, resilient and flexible mixture. Our wheels can cushion the cut and adapt themselves to the surfaces to be worked without damaging the piece or modifying its geometry, reaching extremely difficult points and granting good removal capacities.

Little noisy, they release few powders and can be successfully used both on manual and automatic machines. Siapi technicians work by tailoring the products, listening to the customer demands and providing the most functional and satisfying tool for every specific situation.

Applicazioni

Gli impieghi delle mole Siapi sono molteplici e aumentano ogni giorno con la scoperta di nuovi utilizzi possibili:

- Interno delle pentole da cucina
- Asportazione saldatura
- Lucidatura stampi
- Strumenti chirurgici in acciaio inox
- Finitura arredi in acciaio
- Lucidatura accessori moda
- Lucidatura del filo metallico
- Fusioni di alluminio
- Magnesio (pezzi forgiati)
- Coltelli (fondo incavo)
- Coltelli (scanalature)
- Sbavatura pezzi stampati
- Alluminio forgiato
- Alesatori (scanalature)
- Lucidatura gioielli
- Punte per legno
- Palette di turbine aeronautiche
- Utensili (finitura)
- Anelli e gabbie cuscinetti a sfera
- Tubi acciaio inox
- Pezzi in ottone
- Steli di cacciaviti
- Punte elicoidali
- Ingranaggi (sbavatura)
- Serbatoi in acciaio inox
- Nastro in acciaio per molle
- Coclee di estrusione per materie plastiche
- Lucidatura pettini per telai tessili

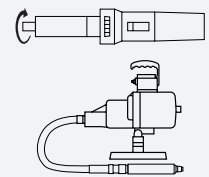
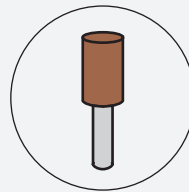
Applications

The uses of Siapi wheels are many and increase every day with the discovery of new possibilities:

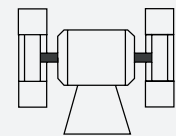
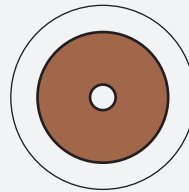
- Edge of cooking pans
- Welding removal
- Mold-polishing
- Stainless steel surgical instruments
- Steel finishes of furniture
- Polishing of fashion accessories
- Polishing of wires
- Aluminum castings
- Magnesium (forged pieces)
- Knives (recessed bottom)
- Knives (grooves)
- Deburring of molded parts
- Forged aluminum
- Reamers (grooves)
- Polishing of jewelry
- Tips for wood
- Palettes of aeronautical turbines
- Tools (finishing)
- Ball bearing cages and rings
- Stainless steel tubes
- Pieces in brass
- Screwdriver stems
- Twist drills
- Gears (deburring)
- Stainless steel tanks
- Spring steel belt
- Extrusion augers for plastic materials
- Polishing combs for textile looms

Indice / Index

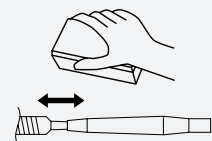
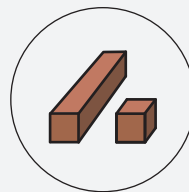
6 Mole con gambo
Mounted points



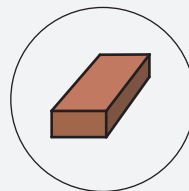
17 Mole a disco, ad anello, a tazza
Disc wheels, ring wheels, cup wheels



22 Lime e cubi
Sticks and cubes



25 Panetti per ravvivare
Dressing blocks

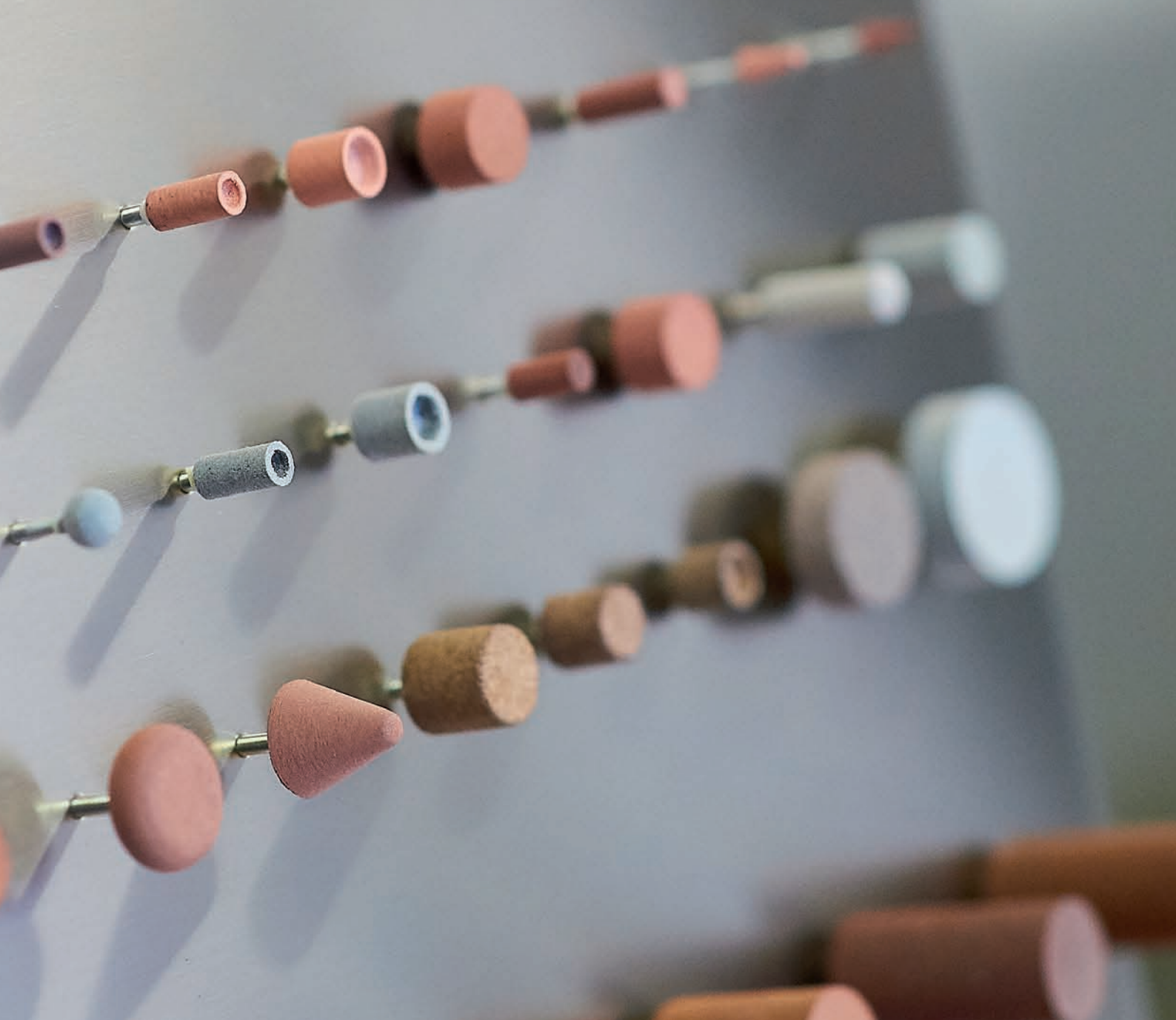


Mole con gambo / Mounted points



GIARPI

dal 1529



Mole con gambo / Mounted points



Disponibili in tutte le forme come da catalogo Fepa ed anche su disegno del cliente.

Legante:

Gomma sintetica
Gomma naturale e sughero
Gomma Poliuretana
Ceramico - Resina

Settori di applicazione:

Esempi di alcune lavorazioni

Carpenterie metalliche
Minuterie
Stampi
Produzione macchine con particolari in acciaio per il settore farmaceutico, alimentare e agricolo
Particolari estetici: settore Nautica
Finiture: settore Arredamento
Lucidatura: Accessori Moda
Lucidatura: Gioielli
Serbatoi in Acciaio

Available in all shapes of the Fepa catalogue, can be produced also on customer's design.

Binders:

Synthetic Rubber
Natural rubber and Cork
Polyurethane rubber
Ceramic - Resin

Industrial sectors:

Exemples of some applications

Metallic carpentry
Small parts
Molds
Machine production with steel details for the pharmaceutical, food and agricultural industries
Aesthetic details: Nautical sector
Finishes: Furnishing sector
Polishing: Fashion accessories
Polishing: Jewelry
Steel tanks

ISO 525 - Norma di riferimento - Forme

ISO 525 - Reference standard - Shapes



Cilindrica
Cylindrical



Forma a ogiva
Pointed tree



Conica
Conical



Cilindrica con testa arrotondata
Cylindrical with radius end



Sfera
Ball



A tazza
Cup



Troncoconica
Truncated cone

Gambi

Dimensione: 2.35 mm. = lunghezza 40 mm.

Dimensione: 3 mm. = lunghezza 40 mm.

Dimensione: 6 mm. = lunghezza 40 – 60 mm.

Dimensione: 8 mm. = lunghezza 100 mm.

Abrasivi

Corindone rosso bruno, Corindone bianco, Carburo di silicio nero e verde, Corindone rosa.

Granulometrie

36 – 46 – 60 – 80 – 120 – 180 – 220 – 240 – 320

Su richiesta 400 – 500 scala "F"

Legante

R = Gomma

V = Ceramico

B = Resinoide

In conformità con la norma ISO 525

Materiali lavorati

Acciaio

Acciaio Inox

Alluminio

Metalli preziosi

Durezza

G = media

K = alta

Stems

Dimensions: 2.35 mm. = length 40 mm.

Dimensions: 3 mm. = length 40 mm.

Dimensions: 6 mm. = length 40 – 60 mm.

Dimensions: 8 mm. = length 100 mm.

Abrasives

Red Brown Corundum, White Corundum, Black and green Silicon. Carbide, Pink Corundum.

Grits

36 – 46 – 60 – 80 – 120 – 180 – 220 – 240 – 320

Upon request 400 – 500 "F" scale

Binder

R = Rubber

V = Ceramic

B = Resinoid

According to the ISO 525 standard

Materials to be worked

Steel

Stainless Steel

Aluminium

Precious Metals

Hardness

G = medium

K = high

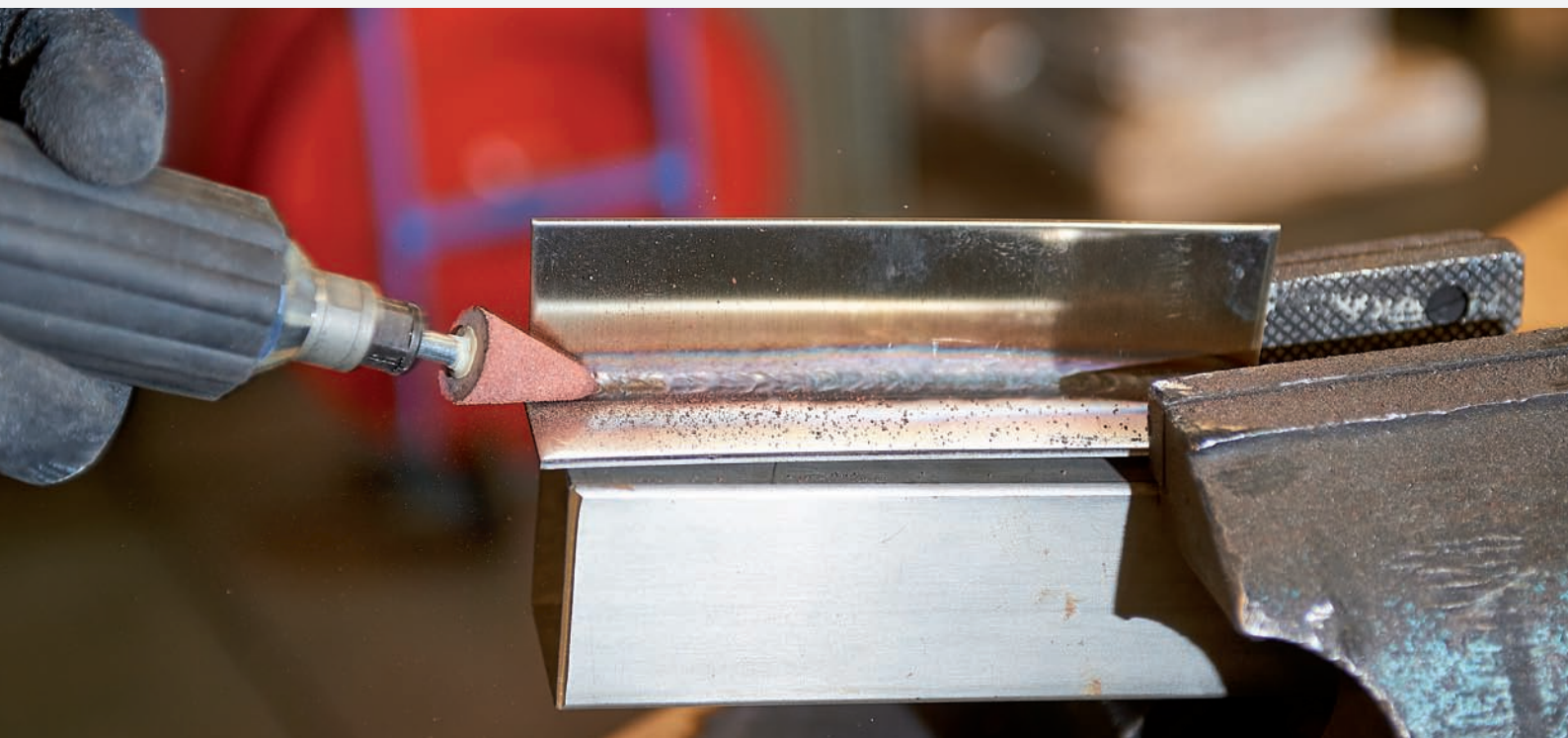
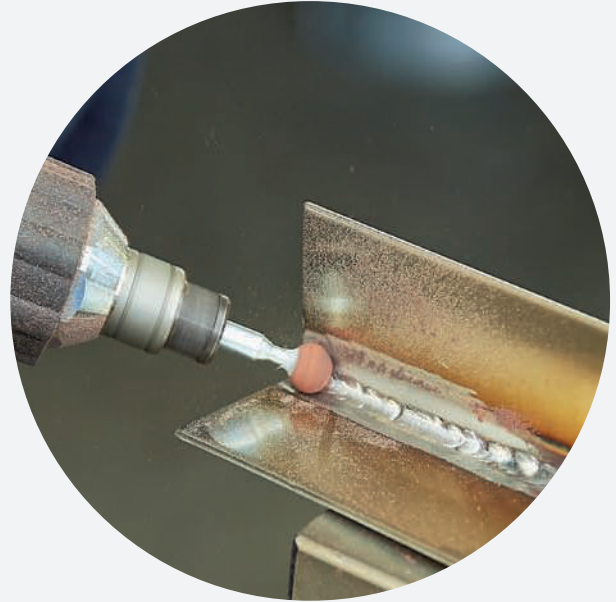


Applicazioni

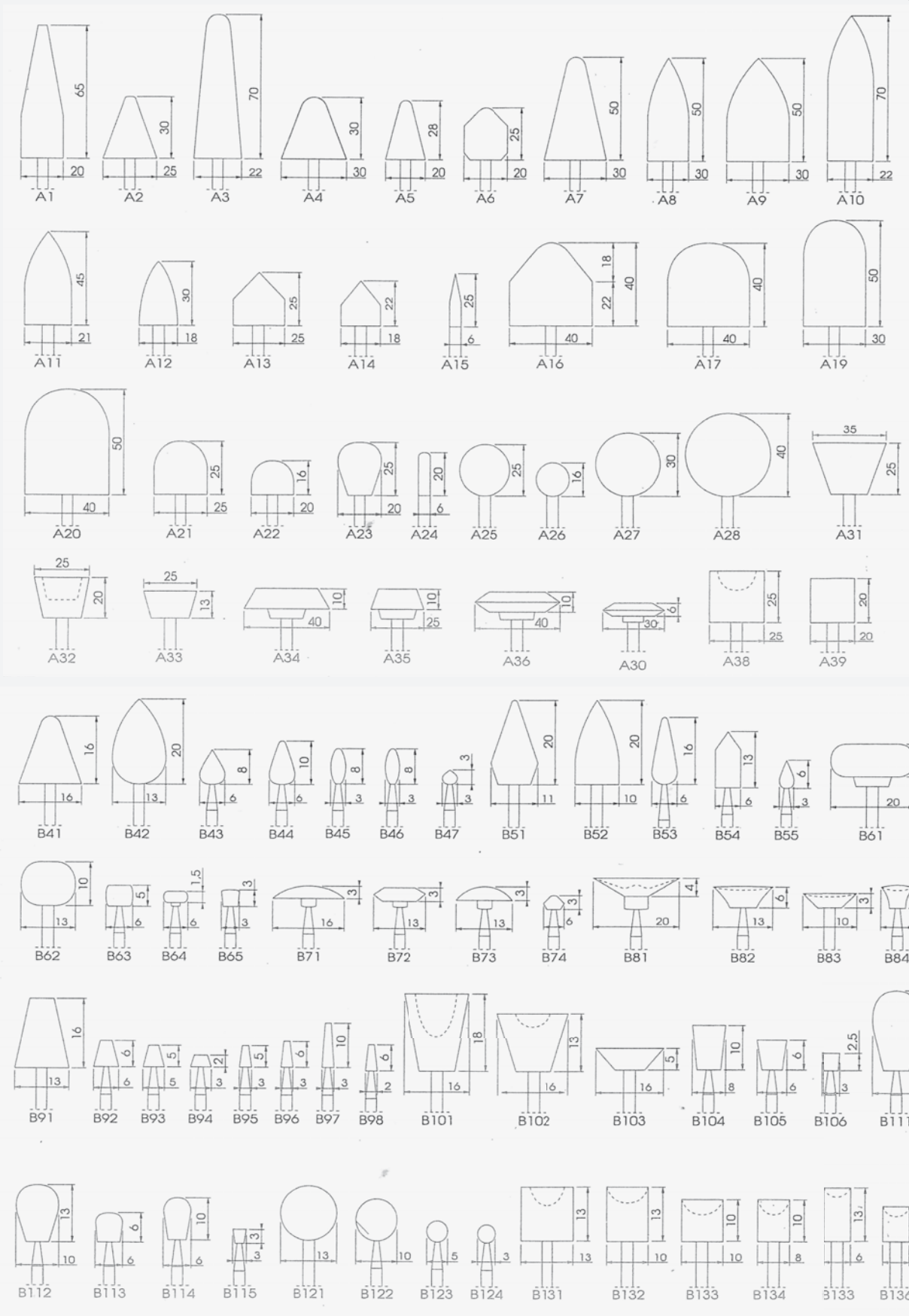
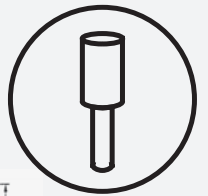
Lavorazione di spigoli / angoli arrotondati
Sbavatura
Spianatura
Lavorazione di superfici
Lavorazione di cordoni di saldatura
Sgrossatura - Finitura
Lucidatura

Applications

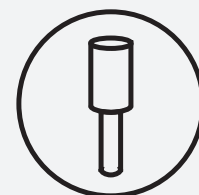
Edge machining / rounded corners
Deburring
Removal
Grinding
Surface processing
Processing of weld seams
Roughing - Finishing
Polishing




Normalizzazione FEPA - gruppi A e B / FEPA Normalization - A and B groups



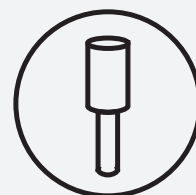
Forma cilindrica / Cylindric shape




Diametro Diameter	Spessore Thickness	Gambo Shaft		RPM * giri al minuto rotations per minute
6	12	3 x 40	100	38000
6	17	3 x 40	100	30000
8	12	3 x 40	100	28000
8	20	3 x 40	100	23250
da 4 A 10	10	3 x 40	100	33000
10	12	3 x 40	50	28500
10	15	3 x 40	50	23250
10	20	3 x 40	50	23250
10	25	6 x 40	50	40500
10	30	6 x 40	50	40500
10	40	6 x 40	50	24000
10	50	6 x 40	50	16500
12	12	3 x 40	50	22500
12	15	3 x 40	50	22500
13	25	6 x 40	50	36370
12	20	6 x 40	50	36370
15	12	3 x 40	50	19120
15	15	3 x 40	50	22500
15	20	6 x 40	50	36370
15	25	6 x 40	50	27000
15	30	6 x 40	50	27000
15	40	6 x 40	50	16000
15	50	6 x 40	50	16500
16	5	3 x 40	50	26400
16	20	6 x 40	50	27000
20	12	3 x 40	50	15900

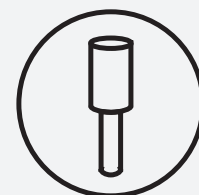
* La tabella indica la velocità massima d'uso con perni da 40 mm di lunghezza
The table indicates the maximum speed for mounted points with stems of 40 mm length

Forma cilindrica / Cylindric shape




Diametro Diameter	Spessore Thickness	Gambo Shaft		RPM * giri al minuto rotations per minute
20	15	6 x 40	50	36370
20	20	6 x 40	50	30750
20	25	6 x 40	50	25870
20	30	6 x 40	50	18520
20	40	6 x 40	50	15370
25	20	6 x 40	50	19120
25	25	6 x 40	50	19120
25	30	6 x 40	50	14620
30	DA 5 A 10	6 x 40	30	29840
30	12	6 x 40	30	29840
30	15	6 x 40	30	29840
30	20	6 x 40	30	22500
30	25	6 x 40	30	18750
30	30	6 x 40	30	18750
30	40	6 x 40	20	10650
40	10	6 x 40	20	25130
40	15	6 x 40	20	25130
40	20	6 x 40	20	17620
40	30	6 x 40	20	12000
40	40	6 x 40	20	12000
45	15	6 x 40	20	12000
45	30	6 x 40	20	12000
50	10	6 x 40	20	15950
25	50	6 x 40	20	12370
50	15	6 x 40	20	15950

* La tabella indica la velocità massima d'uso con perni da 40 mm di lunghezza
The table indicates the maximum speed for mounted points with stems of 40 mm length

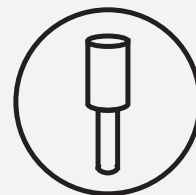


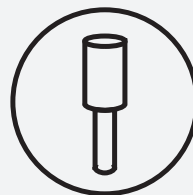
Altre forme – secondo la classificazione FEPA
Other shapes – according to FEPA classification

Forma Shapes	Diametro Diameter	Spessore Thickness	Gambo Shaft	
A1	20	65	6 x 40	20
A2	25	30	6 x 40	20
A3	22	70	6 x 40	20
A4	30	30	6 x 40	20
A5	20	25	6 x 40	20
A7	30	50	6 x 40	20
A8	30	50	6 x 40	20
A9	30	50	6 x 40	20
A10	22	70	6 x 40	20
A11	21	45	6 x 40	20
A12	18	30	6 x 40	20
A19	30	50	6 x 40	20
A20	40	50	6 x 40	10
A21	25	25	6 x 40	20
Spherical (A25)	25	0	6 x 40	20
Spherical (A26)	16	0	6 x 40	50
B136	6	8	3 x 40	50
B134	8	10	3 x 40	50
B133	10	10	3 x 40	50
Conical	10	30	6 x 40	50
Conical	15	20	6 x 40	50
Spherical	8	0	3 x 40	50
Spherical	10	0	6 x 40	50
Troncated cone	15	0	6 x 40	50
Spherical	20	0	6 x 40	50



Molette in poliuretano
Polyurethane mounted points



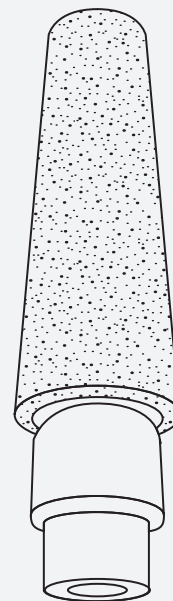


PLD LUX

Molette in poliuretano e perno conico
per la lucidatura di acciaio e metalli preziosi

Polyurethane mounted points and tapered pin
for the polishing of steel and precious metals.

new



Granulometria

Grits

180 - 400

Altre grane su richiesta

other grits upon request

Dimensioni

Dimensions

65 x 23 mm

65 x 15 mm

Vedi tabelle alle pagine 10 11 12

See pages 10 11 12



Mole a disco, ad anello, a tazza / Disk wheels, ring wheels, cup wheels





Mole a disco, ad anello, a tazza

Disc wheels, ring wheels, cup wheels

Settori

Carpenterie metalliche, Produzione pentole, Meccanica di precisione, Industria tessile, Automotive, Ingranaggi, Stampi, Produzione macchine con particolari in acciaio, Nautica, Arredamento, Alimentare, Agricolo, Serbatoi inox

Applicazioni

Lavorazione di spigoli
Sbavatura
Rimozione segni
Preparazione al lucido
Lavorazione cordoni di saldatura: grossi/medi/fini
Sgrossatura - finitura

Diametri / Diameter

125
150

Spessori / Thickness

3-5-6-10-12-15-20

Fori / Holes

20-22-25 (altre misure su richiesta)
(other upon request)

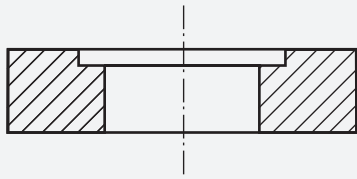
Industrial sectors

Metallic carpentry, Production of pots, Precision mechanics, Textile industry, Automotive, Gears, Molds, Machine production with details in steel, Pharmaceutical, Nautical, Furniture, Food, Agricultural, Inox Tanks

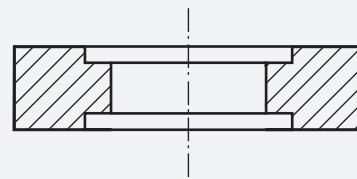
For various applications

Processing of edges
Burring
Removal of marks
Preparation for polishing
Processing of weld seams: big / medium / thin
Roughing - Finishing

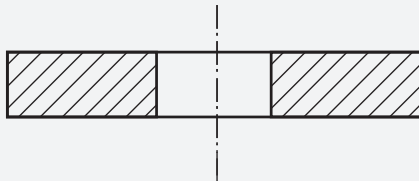




Mola a disco con un incavo
Disc wheel with one recess



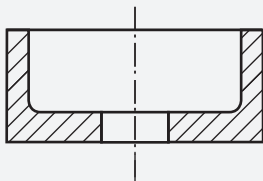
Mola a disco con due incavi
Disc wheel with two recesses



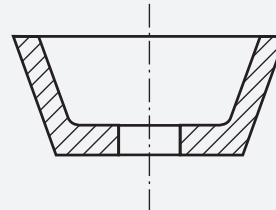
Mola a disco cilindrica
Cylindric disc wheel



Mola ad anello
Ring wheel



Mola a tazza cilindrica
Cylindric cup wheel



Mola a tazza conica
Conical cup wheel

Diametri / Diameter

50
80
100
110
120
125
130
150
200
300
350
400

Spessori / Thickness

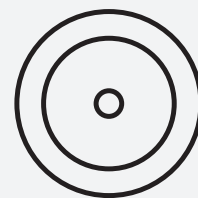
3-25-30
3-4-5-8-10-15-30-40
3-5-6-7-8-10-12-15-20-25-30-40-50
10-20
20
3-5-7
10-15-20-25-30-45
3-4-5-6-8-10-12-15-20-25-30-35-40-50
3-4-5-6-7-8-10-12-15-20-25-30-50
8-10-15-20-25-30-50
40
25-40

Fori / Holes

6-12-25
6-10-16-20-22-30-50
6-8-10-12-16-20-22-25-30
20-25
20
8-14-20-22,5-25
20-25-40
6-8-10-12-14-15-16-20-22-24-25-30-32-40
16-20-22-24-25-30-32-35-50-54-76-90
20-25-35-50-75-76,2-80-127
20
127

altre misure su richiesta
other upon request





Abrasivi

Corindone rosso bruno, Corindone bianco,
Carburo di silicio, Corindone rosa,
Poliuretano

Fori

Standard
14 – 20 – 22,5 – 25 – 50 – 76,2
altri su richiesta

Grane

36/46 – 46 – 60 – 120 – 220
altre grane su richiesta

Durezze

G = media
K = alta
HS = molto alta

Specifiche Siapi

GARR3M 1 / 2 / 3
KARR 3M2
HSVRR12V
GF

Legante

R = Gomma

Materiali

Acciaio
Acciaio Inox
Alluminio
Metalli preziosi

Abrasives

Red Brown Corundum, White Corundum,
Silicon Carbide, Pink Corundum,
Polyurethane

Holes

Standard
14 – 20 – 22,5 – 25 – 50 – 76,2
and other upon request

Grit sizes

36/46 – 46 – 60 – 120 – 220
and other upon request

Hardness

G = medium
K = high
HS = very high

Siapi specifications

GARR3M 1 / 2 / 3
KARR 3M2
HSVRR12V
GF

Binder

R = Rubber

Materials

Steel
Stainless Steel
Aluminium
Precious Metals



Mole a disco, ad anello, a tazza / Disk wheels, ring wheels, cup wheels



Lime e cubi / Sticks and cubes



Lime e cubi / Sticks and cubes



Settori

Carpenterie metalliche, Meccanica di precisione, Stampi, Officine meccaniche, Pulitura del filo metallico (cubo)

Applicazioni

Correzioni manuali di piccoli segni
Ravivatura di utensili diamantati
Pulitura residuo metallico duro

Disponibili nelle forme

Rettangolare
Cilindrica

Abrasivi

Corindone rosso bruno, Poliuretano

Misure standard

4 x 6 x 60
25 x 50 x 90
150 x 10 x 10
150 x 15 x 20
200 x 25 x 20

Industrial sectors

Metallic carpentry, Precision mechanics, Molds, Wire Polishing (cube)

Applications

Manual corrections of small marks
Dressing of diamond tools
Cleaning of the carbide residue

Available in the shapes

Rectangular
Cylindrical

Abrasives

Red brown corundum, Polyurethane

Typical dimensions

4 x 6 x 60
25 x 50 x 90
150 x 10 x 10
150 x 15 x 20
200 x 25 x 20



Grane

46 - 60 - 120 - 220
altre grane su richiesta

Durezze

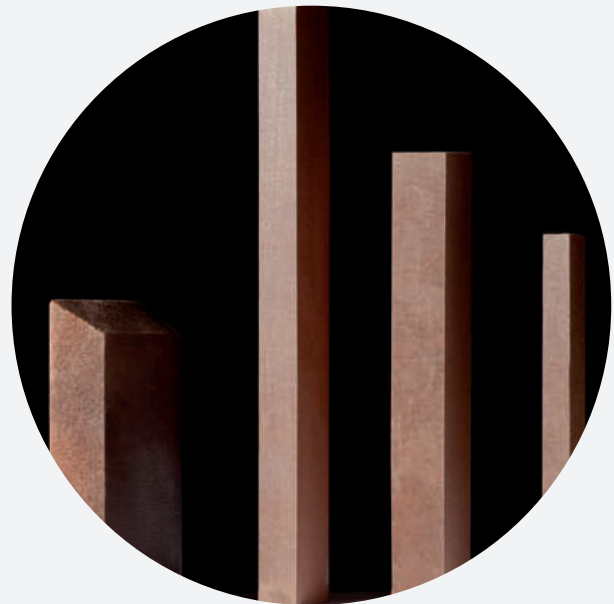
G = media
K = alta

Legante

R = Gomma

Materiali

Acciaio
Acciaio Inox
Alluminio
Metalli preziosi



Grits

46 - 60 - 120 - 220

Hardness

G = medium
K = high

Binder

R = Rubber

Materials

Steel
Stainless Steel
Aluminium
Precious Metals



Panetti per ravvivare / Dressing blocks



Adatti per operazioni di ravvivatura:

Abrasivi

Corindone rosso bruno

Grane

46 - 60 - 120
altre grane su richiesta

Durezza

G = media
K = alta
HS = molto alta

Legante

R = Gomma

Suitable for dressing operations:

Abrasives

Red brown corundum

Grit sizes

46 - 60 - 120
other grits upon request

Hardness

G = medium
K = high
HS = very high

Binder

R = Rubber



"RICHIEDI LA TUA MARCATURA PERSONALIZZATA"

"REQUEST YOUR CUSTOMIZED MARKING"



- | | | | |
|-------------|------------|---------------|-----------|
| Austria | Polonia | Sudafrica | Argentina |
| Belgio | Portogallo | | Bolivia |
| Bielorussia | Rep. Ceca | Cina | Brasile |
| Bosnia | Romania | Corea del sud | Cile |
| Francia | Russia | Giappone | Colombia |
| Germania | Slovacchia | India | Messico |
| Grecia | Spagna | Thailandia | Uruguay |
| Inghilterra | Svezia | | Paraguay |
| Italia | Svizzera | Australia | USA |
| Olanda | Ucraina | Nuova Zelanda | |

Contatti / Contact us

Siapi srl:

Via Fratelli Bressan 21

20126 Milan / Italy

T. +39 02 27088024

F. +39 02 2571754

info@siapi.com

www.siapi.com

siapigrindingtechnologies



Certificazioni / Certifications



Social Responsibility



Siapi per l'Ambiente

SINCE 1929



SIAPI
GRINDING TECHNOLOGIES

